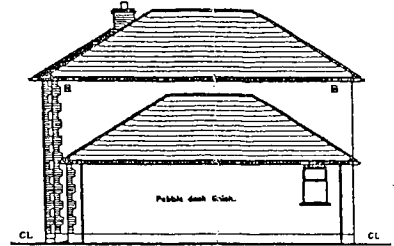
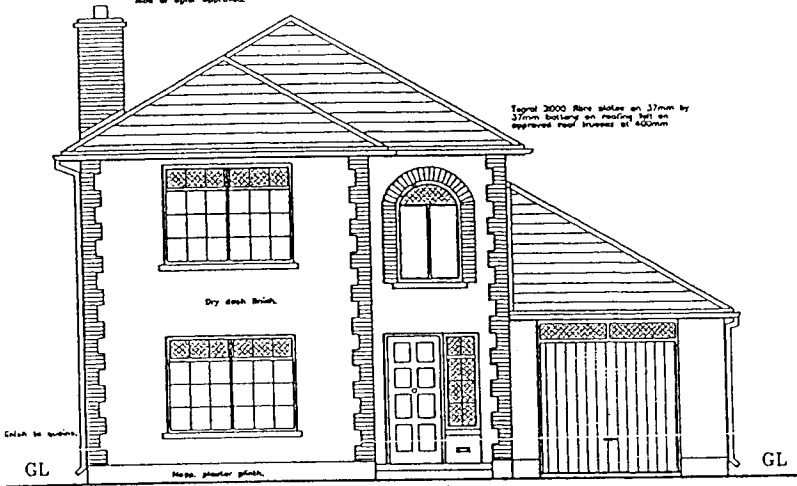


Flashings, gutters and cover flashings to be in aluminium, lead or other approved.

Typical 2000 fibre slates on 37mm by 37mm battens on rafter feet on approved roof trusses at 400mm

All work to be carried out in accordance with the Building Regulations.

Typical 2000 fibre slates on 37mm by 37mm battens on rafter feet on approved roof trusses at 400mm

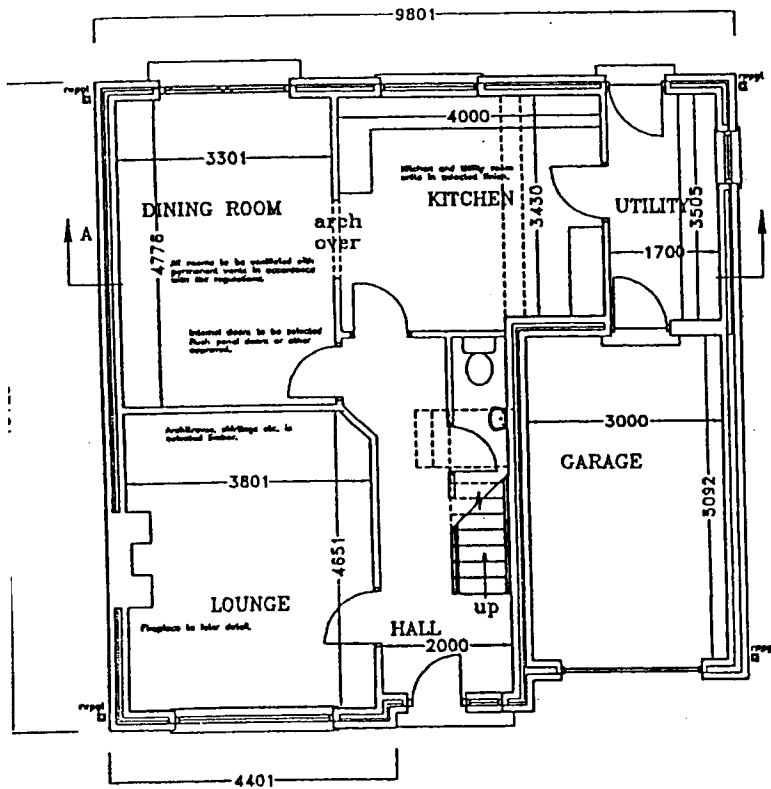


SIDE ELEVATION SCALE 1:100

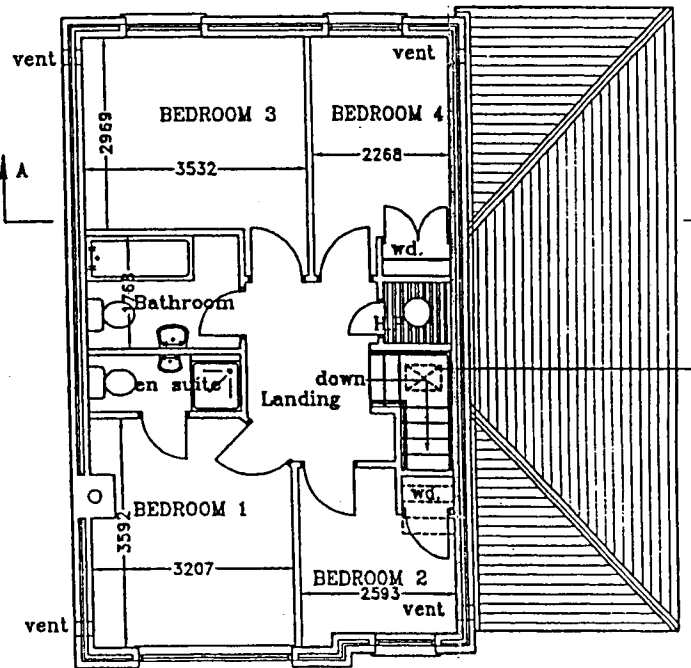
FRONT ELEVATION SCALE 1:100

Total Floor Area:
122.93m²

External walls to be constructed using 300mm dense void construction with 100mm outer brick leaf on either side of cavity. 400mm air cavity. 60mm approved insulation and 100mm inner brick leaf.



GROUND FLOOR PLAN SCALE 1:100



FIRST FLOOR PLAN SCALE 1:100